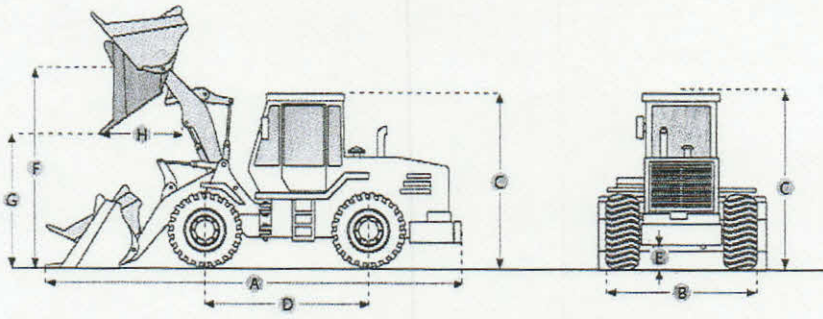


CATERPILLAR 950G WHEEL LOADER

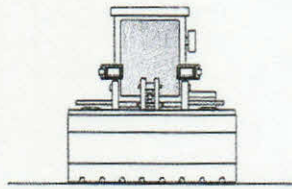


Bucket

DUMP CLEARANCE AT MAX RAISE 9.5 ft in 2890 mm

Dimensions

LENGTH WITH BUCKET ON GROUND	26.3 ft in 8025 mm
WIDTH OVER TIRES	9.5 ft in 2890 mm
HEIGHT TO TOP OF CAB	11.5 ft in 3500 mm
GROUND CLEARANCE	1.3 ft in 400 mm
REACH AT MAX LIFT AND DUMP	4.2 ft in 1270 mm



CATERPILLAR 950G WHEEL LOADER

Specification

Engine		
MODEL	3126DITA	
NET POWER	197 hp	146.9 kw
GROSS POWER	180 hp	134.2 kw
DISPLACEMENT	439.4 cu in	7.2 L
Operational		
OPERATING WEIGHT	39202.6 lb	17782 kg
FUEL CAPACITY	77.9 gal	295 L
HYDRAULIC SYSTEM FLUID CAPACITY	40.4 gal	153 L
STATIC TIPPING WEIGHT	26885.4 lb	12195 kg
Transmission		
NUMBER OF FORWARD GEARS	4	
NUMBER OF REVERSE GEARS	4	
MAX SPEED - FORWARD	23 mph	37 km/h
MAX SPEED - REVERSE	25.2 mph	40.5 km/h
Hydraulic System		
RAISE TIME	6.3 sec	
DUMP TIME	2.2 sec	
LOWER TIME	2.2 sec	
Bucket		
BREAKOUT FORCE	32810 lb	kN
LIFT CLEARANCE AT MAX RAISE	9.5 ft in	2890 mm
BUCKET WIDTH	9.6 ft in	2930 mm
BUCKET CAPACITY - HEAPED	3.5 yd ³	2.7 m ³
Dimensions		
LENGTH WITH BUCKET ON GROUND	26.3 ft in	8025 mm
WIDTH OVER TIRES	9.5 ft in	2890 mm
HEIGHT TO TOP OF CAB	11.5 ft in	3500 mm
GROUND CLEARANCE	1.3 ft in	400 mm
REACH AT MAX LIFT AND DUMP	4.2 ft in	1270 mm

